

**COLD AIR**



**INDUCTIONS**

**Installation Instructions**

**Pontiac GTO**

**Part #'s 501-0904 (B) & 501-0956 (B)**



**[WWW.COLDAIRINDUCTIONS.COM](http://WWW.COLDAIRINDUCTIONS.COM)**

**\*\*This Product is NOT C.A.R.B. Compliant\*\***



## Parts List

<b>1</b>	<b>Insulated Air Box \ Lid</b>
<b>1</b>	<b>Thermal Coated Intake Tube</b>
<b>1</b>	<b>High Performance Air Filter: CF-9350 for 2004 &lt;or&gt; CF-8385 for the 2005-06)</b>
<b>1</b>	<b>Installation Packet</b>
<b>4</b>	<b>Stainless Hose Clamps</b>
<b>2</b>	<b>Silicone Couplers: 2004: (1) 4" &amp; (1) 3.5" 2005-06: (1) 4" &amp; (1) 3.75"</b>

## Tools Required

<b>10mm Socket &amp; Ratchet</b>
<b>Flat-head Screw Driver</b>

**\*\*Disconnect negative battery cable before starting\*\***

### **1. Removing Radiator Shroud**

- I.** Remove all five fasteners (As shown in figure 1). Remove fasteners by prying middle tab up.
- II.** Remove radiator shroud.



**Figure 1**

### **2. Remove Intake Hose /MAF.**

- I.** Loosen both hose clamps (As shown in figure 2)
- II.** Unplug sensors on MAF.
- III.** Unplug crankcase ventilation tube.
- IV.** Remove intake hose & MAF



**Figure 2**

### **3. Removing OEM air box**

- I.** Remove air box lid by removing the three screws. Remove air filter.
- II.** Remove air box by pulling the air box up and off the rubber grommet receptacles. (As shown in figure 3). Unfasten Wire and its retainer from side of air box. (As shown in figure 4).
- III.** Remove front portion of air box by simply lifting out. (as shown in figure 5)
- IV.** Remove both torx bolts (as shown in figure 6)



**Figure 3**



**Figure 4**

## 4. Bending Air Conditioning Hose

I. Bend air conditioning hose (see figure 7). Make sure to use **CAUTION** as not to kink hose. Bend just enough to clear new CAI.



Figure 5

## 5. Installing New CAI Box

I. Install new CAI Box (as shown in figure 8).

II. Fasten air box with both torx bolts that were removed in step 3 (see figure 9)

III. Install side bracket (see figure 10)



Figure 6

## 6. Installing New Air Filter

I. Install by putting tapered end in air box and inlet of air filter through provided hole (see figure 11).

II. Install hose clamp on end of filter (see figure 12). **Do not** tighten clamp at this time.



Figure 7

## 7. Reinstalling Induction Tube & MAF

I. Install end of MAF directly in to the CAI Inc, air filter (As shown in figure 13).

II. Install tube onto MAF and tighten clamps on MAF & air filter.

III. Install end of the induction tube on to the throttle body (As shown in figure 14).

IV. Tighten all hose clamps

V. Reconnect MAF sensors and crankcase ventilation tube that were unconnected in step 2.



Figure 8

## 8. Reinstalling Radiator Shroud

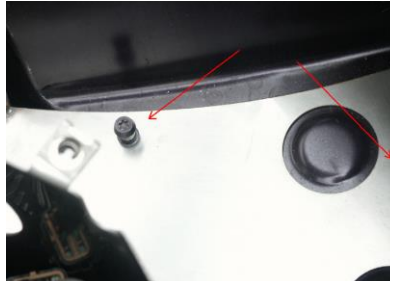
- I. Reinstall radiator shroud.
- II. Reinstall all five fasteners (shown in figure 1).

## 9. Installing CAI Air Box Lid

- I. Place edge of lid under the edge of the front fender (As shown in figure 15)
- II. Align 1/4 turn fasteners with receptacle on air box. Turn fasteners 1/4 turn.

**\*\*Important\*\***

Make sure to check & re-tighten all clamps and air filter periodically.



**Figure 9**



**Figure 10**



**Figure 11**



**Figure 12**



**Figure 13**



**2004 Finished Install Example**



**Figure 14**



**2005-06 Finished Install Example**



**Figure 15**

**\*\*IMPORTANT\*\***

## **Warranty Registration Instructions**

This product comes with a Limited Lifetime Warranty and must be registered online for your warranty to be activated.

To register your product:

1. Go to: [www.ColdAirInductions.com/contact-us/register](http://www.ColdAirInductions.com/contact-us/register)
2. Fill out our Registration form
3. Click Submit

\*Warranty details can be found under the FAQ section on our website\*