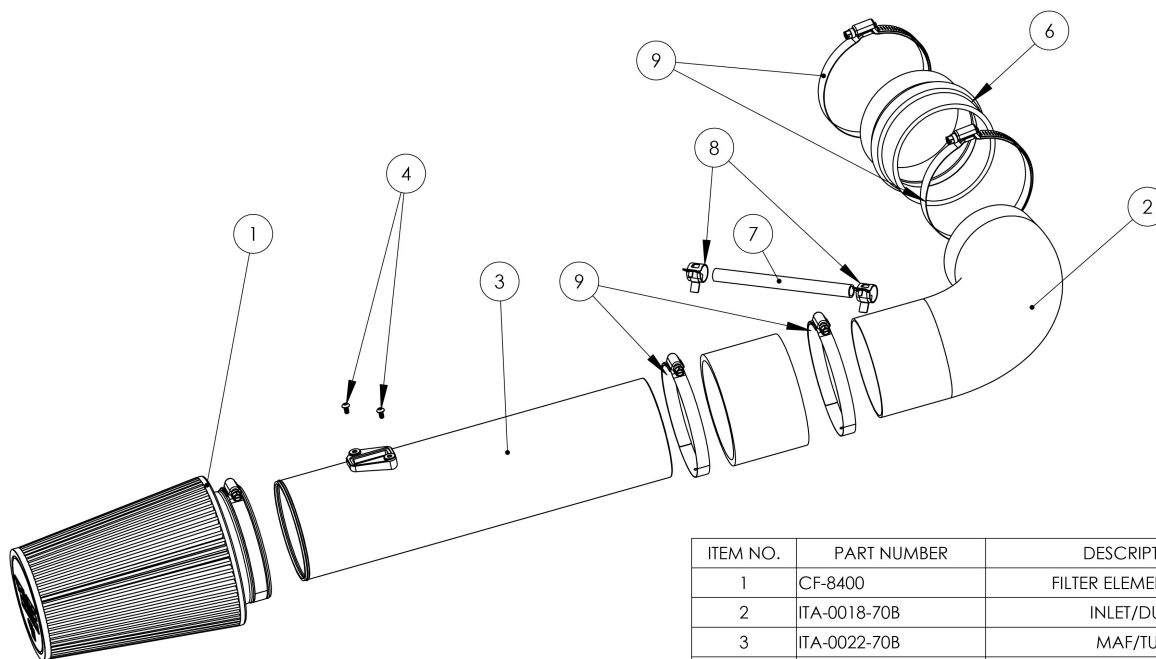


# ELITE SERIES

## INSTALLATION INSTRUCTIONS



ITEM NO.	PART NUMBER	DESCRIPTION	QTY.
1	CF-8400	FILTER ELEMENT-A/CL	1
2	ITA-0018-70B	INLET/DUCT	1
3	ITA-0022-70B	MAF/TUBE	1
4	FTN-0001-BCM	M4-0.7 x 8mm S.S. BUTTON HEAD CAP SCREW	2
5	SSHC-400-3	STRAIGHT SILICONE COUPLER	1
6	HSH-400	HUMP SILICONE COUPLER	1
7	RW1-375	RUBBER PCV HOSE	1
8	CTC-0375	Constant-Tension Spring-Band Clamp	2
9	LGC400(91-114mm)	LINED HOSE CLAMP	4

**Please Note: Once modified this kit is non returnable.**

If you need any assistance, please visit our website [www.coldairinductions.com](http://www.coldairinductions.com) to view the install video or call 1-810-392-9999 to speak with a customer service representative.

**NOTE: FAILURE TO FOLLOW INSTALLATION INSTRUCTIONS AND NOT USING THE PROVIDED HARDWARE MAY DAMAGE THE AIR INDUCTION SYSTEM, THROTTLE BODY AND ENGINE.**

**NOTE: NOT LEGAL FOR SALE OR USE IN CALIFORNIA**



---

Cold Air Inductions Inc. 717 Burnell Rd. Memphis, MI 48041  
Phone: 810-392-9999 Monday-Friday 8:00 am to 4:30 pm EST  
Web: [coldairinductions.com](http://coldairinductions.com) Email: [support@coldairinductions.com](mailto:support@coldairinductions.com)

---